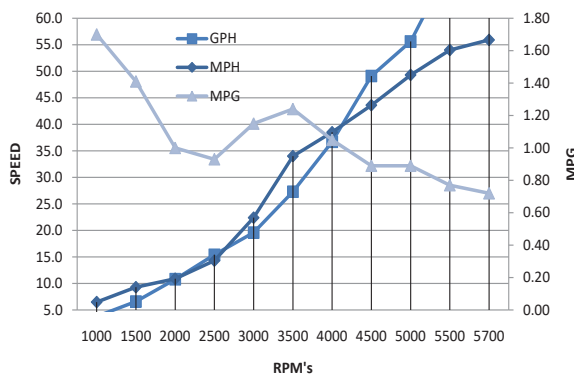




Sailfish 360 CC - Performance Bulletin

Motors: Triple Yamaha F300XCA / F300ECA / LF300XCA

PERFORMANCE			
RPM	MPH	GPH	MPG
1000	6.5	3.8	1.70
1500	9.3	6.6	1.41
2000	10.9	10.8	1.00
2500	14.3	15.4	0.93
3000	22.4	19.6	1.15
3500	34.0	27.3	1.24
4000	38.5	36.7	1.05
4500	43.6	49.1	0.89
5000	49.3	55.6	0.89
5500	54.0	69.9	0.77
5700	55.9	78.0	0.72
ACCELERATION			
0 To 30MPH		6.02 Seconds	
TEST CONDITIONS			
NUMBER OF PEOPLE			4
AIR / WATER TEMP (Fahrenheit)			88° F / 83° F
ELEVATION (IN FEET ABOVE SEA LEVEL)			194'
WIND VELOCITY			0~ 5 MPH



MANUFACTURER INFO	
NAME:	Seminole Marine Group
STREET:	PO Box 1899
CITY, STATE, ZIP:	Cairo, GA 39828
PHONE:	229-377-2125
FAX:	229-377-1855
WEBSITE:	www.sailfishboats.com
BOAT DETAILS	
BOAT MODEL	360 CC
LENGTH	36' 0"
BEAM	11' 2"
DRY WEIGHT	12,700
WEIGHT AS TESTED	13,371
MAXIMUM HP	1,050 HP
FUEL CAPACITY	400 GAL
ENGINE DETAILS	
ENGINE MODEL/S	F300XCA / F300ECA / LF300XCA
HORSEPOWER	300 HP @ 5500 RPM
INDUCTION	EFI/VCT/DOHC
DISPLACEMENT	4.2 L
WEIGHT	562 - 588 - 562 LBS
GEAR RATIO	1.75 : 1
ENGINE MOUNTING HEIGHT	
MOUNTING HOLE POSITION	#3
PROPELLER/S	
SERIES	YAMAHA SALTWATER SERIES II
DIAMETER/PITCH	15 x 20
YAMAHA PART # (sgl/twin)	6CE-45932-20-00 / 6CF-45932-20-00
PROPELLER MATERIAL	POLISHED STAINLESS STEEL
COMMENTS	
Test weight includes 4 batteries, 80 gallons fuel, 4 persons, safety and test gear (approx. 40 lbs).	

Notice to Consumer: The information and data contained in this Performance Bulletin is approximate and subject to many different factors and variables. It is provided as a guideline only and should not be relied upon as representative of actual performance. Your boat's performance may be different than the information contained in this Performance Bulletin due to various factors including your boat's actual weight, wind and water conditions, temperature, humidity, elevation, bottom paint, boat options affecting wind/water drag and/or boat weight, and operator ability. Please confirm the specifications and performance data on your specific boat/engine combination with your dealer prior to purchase. Seminole Marine Inc. reserves the right to change the specifications and performance data of this Performance Bulletin or engine without notice.

FISHING FOCUSED. FAMILY FRIENDLY.™

Seminole Marine Group | sailfishboats.com

360 CENTER CONSOLE PERFORMANCE BULLETIN



Motors: Triple Mercury 300XXL Verado

PERFORMANCE			
RPM	MPH	GPH	MPG
1000	8.50	4.60	1.80
2000	10.50	13.60	0.80
3000	19.80	24.90	0.80
3500	26.10	34.00	0.80
4000	35.90	41.90	0.90
4500	42.30	45.80	0.90
5000	50.90	63.30	1.00
5500	55.60	68.20	0.80
6000	57.90	76.40	0.80
6100	59.90	79.10	0.80

ACCELERATION	
TOP SPEED (MPH @ RPM)	59.9@6100
ACCELERATION 0-20MPH (SECONDS)	5.00
ACCELERATION 0-30MPH (SECONDS)	6.5
BEST FUEL ECONOMY (MPG @ RPM)	1.0@5000

TEST CONDITIONS	
NUMBER OF PEOPLE	2
AIR TEMP (FARENHIGHT)	55°
ELEVATION (FT. ABOVE SEA LEVEL)	243
WIND VELOCITY (MPH)	8
SEA STATE	Smooth

MANUFACTURER INFO	
NAME:	Sailfish Boats
STREET:	2501 Industrial Park Drive
CITY, STATE, ZIP:	Cairo, GA 39828
PHONE:	229-377-2125
FAX:	229-377-1855
WEBSITE:	www.sailfishboats.com

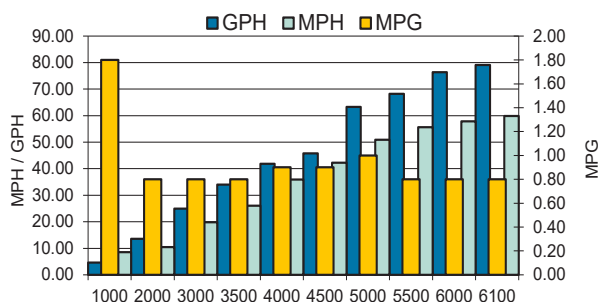
BOAT DETAILS	
BOAT MODEL	360CC
LENGTH	36' 0"
BEAM	11' 2"
WEIGHT AS TESTED	15,700
MAXIMUM HP	1,050
FUEL CAPACITY	400 gal

ENGINE DETAILS	
ENGINE MODEL/S	300 XXL Verado
CYLINDERS	V8
HORSEPOWER	300 HP
GEAR RATIO	1.85

ENGINE MOUNTING HEIGHT	
MOUNTING HOLE POSITION	#2

PROPELLER/S	
SERIES	Rev 4
PART NUMBER - RH x2	857026A46
PART NUMBER - LH	857027A46
PROPELLER MATERIAL	Polished Stainless Steel
NUMBER OF BLADES	4
DIAMETER / PITCH	19
NOTES	Rev 4 17p optional for heavy loads

COMMENTS	
BOAT EQUIPPED WITH HARDTOP, 50 GAL OF FUEL, TWO PERSONS, MISC. SAFETY AND TEST GEAR (APPROX 100 LBS)	



Notice to Consumer: The information and data contained in this Performance Bulletin is approximate and subject to many different factors and variables. It is provided as a guideline only and should not be relied upon as representative of actual performance. Your boat's performance may be different than the information contained in this Performance Bulletin due to various factors including your boat's actual weight, wind and water conditions, temperature, humidity, elevation, bottom paint, boat options affecting wind/water drag and/or boat weight, and operator ability. Please confirm the specifications and performance data on your specific boat/engine combination with your dealer prior to purchase. Seminole Marine Inc. reserves the right to change the specifications and performance data of this Performance Bulletin or engine without notice.



SF01272019Z



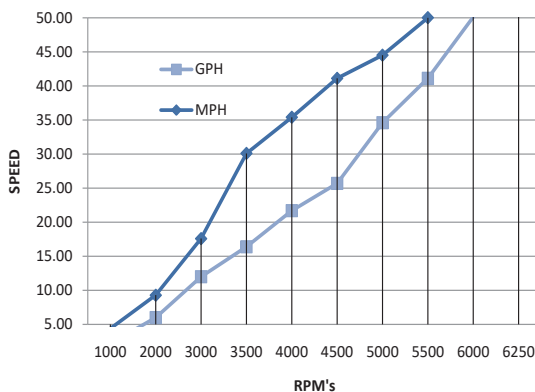
www.sailfishboats.com



Sailfish 290 CC - Performance Bulletin

Motors: Twin Mercury 300XL Verado

PERFORMANCE		
RPM	MPH	GPH
1000	4.40	2.20
2000	9.30	6.00
3000	17.60	12.00
3500	30.10	16.40
4000	35.40	21.70
4500	41.10	25.70
5000	44.50	34.60
5500	50.00	41.10
6000	53.80	50.10
6250	57.50	59.60
ACCELERATION		
0-20 Mph		4.7 Sec
TEST CONDITIONS		
NUMBER OF PEOPLE		
AIR TEMP (Fahrenheit)		
ELEVATION (IN FEET ABOVE SEA LEVEL)		
WIND VELOCITY		



MANUFACTURER INFO	
NAME:	Sailfish Boats
STREET:	PO Box 1899
CITY, STATE, ZIP:	Cairo, GA 39828
PHONE:	229-377-2125
FAX:	229-377-1855
WEBSITE:	www.sailfishboats.com
BOAT DETAILS	
BOAT MODEL	290CC
LENGTH	28' 6"
BEAM	9'
APPROX WET WEIGHT	8000 lbs
MAXIMUM HP	600 HP
FUEL CAPACITY	240 gal
ENGINE DETAILS	
ENGINE MODEL/S	300 XL Verado
HORSEPOWER	300 HP
INDUCTION	EFI
DISPLACEMENT	2.6L
WEIGHT	657 Lbs
GEAR RATIO	1:75:1 or 1.85:1
ENGINE MOUNTING HEIGHT	
MOUNTING HOLE POSITION	#3
PROPELLER/S	
SERIES	Mirage® Plus
PITCH	19
MERCURY PART # (sgl/twin)	13700A46
PROPELLER MATERIAL	POLISHED STAINLESS STEEL
COMMENTS	
BOAT EQUIPPED WITH HARDTOP, 22 GAL OF FUEL, TWO PERSONS, MISC. SAFETY AND TEST GEAR (APPROX 100 LBS)	

Notice to Consumer: The information and data contained in this Performance Bulletin is approximate and subject to many different factors and variables. It is provided as a guideline only and should not be relied upon as representative of actual performance. Your boat's performance may be different than the information contained in this Performance Bulletin due to various factors including your boat's actual weight, wind and water conditions, temperature, humidity, elevation, bottom paint, boat options affecting wind/water drag and/or boat weight, and operator ability. Please confirm the specifications and performance data on your specific boat/engine combination with your dealer prior to purchase. Seminole Marine Inc. reserves the right to change the specifications and performance data of this Performance Bulletin or engine without notice.

FISHING FOCUSED. FAMILY FRIENDLY.™

Seminole Marine Group | sailfishboats.com

360 CENTER CONSOLE PERFORMANCE BULLETIN



Motors: Triple Mercury 350XXL Verado

PERFORMANCE			
RPM	MPH	GPH	MPG
1000	7.0	4.0	1.8
2000	10.2	9.2	1.1
3000	20.0	20.3	1.1
3500	26.4	26.3	1.2
4000	31.2	29.3	1.1
4500	37.5	41.4	0.9
5000	42.0	44.2	1.0
5500	47.5	56.3	0.8
6000	52.0	72.7	0.7
6500	55.0	82.1	0.7

ACCELERATION	
TOP SPEED (MPH @ RPM)	55 @ 6500
ACCELERATION 0-20MPH (SECONDS)	3.00
ACCELERATION 0-30MPH (SECONDS)	5
BEST FUEL ECONOMY (MPG @ RPM)	1.2 @ 3500

TEST CONDITIONS	
NUMBER OF PEOPLE	2
AIR TEMP (FARENHIGHT)	75°
ELEVATION (FT. ABOVE SEA LEVEL)	Sea Level
WIND VELOCITY (MPH)	5
SEA STATE	Smooth
FRESH/SALT WATER	Salt

MANUFACTURER INFO	
NAME:	Sailfish Boats
STREET:	2501 Industrial Park Drive
CITY, STATE, ZIP:	Cairo, GA 39828
PHONE:	229-377-2125
FAX:	229-377-1855
WEBSITE:	www.sailfishboats.com

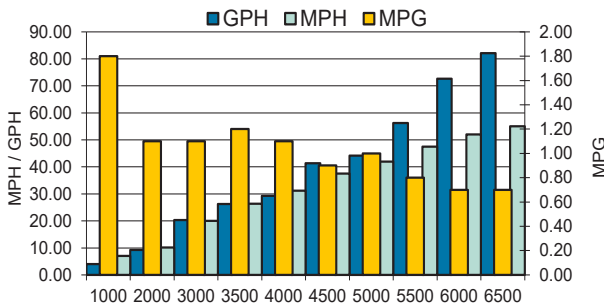
BOAT DETAILS	
BOAT MODEL	360CC
LENGTH	36' 0"
BEAM	11' 2"
WEIGHT AS TESTED	18,250
MAXIMUM HP	1,050
FUEL CAPACITY	400 gal

ENGINE DETAILS	
ENGINE MODEL/S	Triple 350 XXL Verado
CYLINDERS	L6
HORSEPOWER	350HP
GEAR RATIO	1.75

ENGINE MOUNTING HEIGHT	
MOUNTING HOLE POSITION	#2

PROPELLER/S	
SERIES	Rev 4
PART NUMBER - RH x2	857024A46
PART NUMBER - LH	857025A46
PROPELLER MATERIAL	Polished Stainless Steel
NUMBER OF BLADES	4
DIAMETER / PITCH	17

COMMENTS	
BOAT EQUIPPED WITH HARDTOP, SEAKEEPER OPTION, 50 GAL OF FUEL, TWO PERSONS, MISC. SAFETY AND TEST GEAR (APPROX 100 LBS)	



Notice to Consumer: The information and data contained in this Performance Bulletin is approximate and subject to many different factors and variables. It is provided as a guideline only and should not be relied upon as representative of actual performance. Your boat's performance may be different than the information contained in this Performance Bulletin due to various factors including your boat's actual weight, wind and water conditions, temperature, humidity, elevation, bottom paint, boat options affecting wind/water drag and/or boat weight, and operator ability. Please confirm the specifications and performance data on your specific boat/engine combination with your dealer prior to purchase. Seminole Marine Inc. reserves the right to change the specifications and performance data of this Performance Bulletin or engine without notice.



SF04162019Z



www.sailfishboats.com

360 CENTER CONSOLE PERFORMANCE BULLETIN

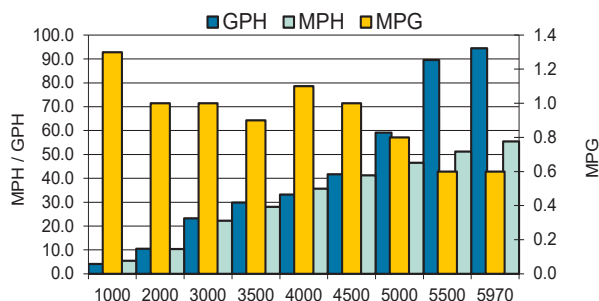


Motors: Triple Mercury 350XXL Verado

PERFORMANCE			
RPM	MPH	GPH	MPG
1000	5.5	4.1	1.3
2000	10.4	10.5	1.0
3000	22.2	23.3	1.0
3500	28.1	29.9	0.9
4000	35.7	33.2	1.1
4500	41.3	41.7	1.0
5000	46.5	59.2	0.8
5500	51.2	89.6	0.6
5970	55.5	94.5	0.6

ACCELERATION	
TOP SPEED (MPH @ RPM)	55.5 @ 5970
ACCELERATION 0-20MPH (SECONDS)	4.00
ACCELERATION 0-30MPH (SECONDS)	6.5
BEST FUEL ECONOMY (MPG @ RPM)	1.1 @ 4000

TEST CONDITIONS	
NUMBER OF PEOPLE	2
AIR TEMP (FAREHEIGHT)	75°
ELEVATION (FT. ABOVE SEA LEVEL)	Sea Level
WIND VELOCITY (MPH)	5
SEA STATE	Smooth
FRESH/SALT WATER	Salt



MANUFACTURER INFO	
NAME:	Sailfish Boats
STREET:	2501 Industrial Park Drive
CITY, STATE, ZIP:	Cairo, GA 39828
PHONE:	229-377-2125
FAX:	229-377-1855
WEBSITE:	www.sailfishboats.com

BOAT DETAILS	
BOAT MODEL	360CC
LENGTH	36' 0"
BEAM	11' 2"
WEIGHT AS TESTED	16,250
MAXIMUM HP	1,050
FUEL CAPACITY	400 gal

ENGINE DETAILS	
ENGINE MODEL/S	Triple 350 XXL Verado
CYLINDERS	L6
HORSEPOWER	350HP
GEAR RATIO	1.75

ENGINE MOUNTING HEIGHT	
MOUNTING HOLE POSITION	#2

PROPELLER/S	
SERIES	Rev 4
PART NUMBER - RH x2	857026A46
PART NUMBER - LH	857027A46
PROPELLER MATERIAL	Polished Stainless Steel
NUMBER OF BLADES	4
DIAMETER / PITCH	19

COMMENTS	
BOAT EQUIPPED WITH HARDTOP, SEAKEEPER OPTION, 50 GAL OF FUEL, TWO PERSONS, MISC. SAFETY AND TEST GEAR (APPROX 100 LBS)	

Notice to Consumer: The information and data contained in this Performance Bulletin is approximate and subject to many different factors and variables. It is provided as a guideline only and should not be relied upon as representative of actual performance. Your boat's performance may be different than the information contained in this Performance Bulletin due to various factors including your boat's actual weight, wind and water conditions, temperature, humidity, elevation, bottom paint, boat options affecting wind/water drag and/or boat weight, and operator ability. Please confirm the specifications and performance data on your specific boat/engine combination with your dealer prior to purchase. Seminole Marine Inc. reserves the right to change the specifications and performance data of this Performance Bulletin or engine without notice.



SF04162019Z



www.sailfishboats.com