



# SAILFISH

DEMAND THE DIFFERENCE



# THERE IS A DIFFERENCE >

CHECKOUT SAILFISH BEFORE YOU SPEND  
YOUR HARD EARNED MONEY.



For nearly 20 years Sailfish Boats has provided the saltwater enthusiast with a variety of reliable, stylish and user friendly boats capable of withstanding the riggers of the inshore and offshore environment. Over that time Sailfish has grown to be one of the largest manufactures in its class. With a modern facility located in Cairo, Georgia, just a few miles north of the Florida state line, Sailfish is able to distribute to a national dealer network, offering top quality service no matter where you are.

Privately owned, Sailfish is managed by a team of owners and marine industry professionals who are dedicated to designing, building, and delivering the best quality boat your money can buy.

Quality is our number one goal when designing and constructing our product. Every Sailfish boat is built to rigid quality standards that are monitored throughout the manufacturing process. Critical systems such as fuel, electrical and plumbing are tested and retested before being certified ready for delivery.

Performance and function demanded by today's consumer are also integral to the Sailfish lineup. Sailfish has become the leader in inshore and offshore hull design by incorporating advanced design running surfaces, matched to each individual model to maximize performance. From our variable deadrise deep vee offshore boats to our transitional bay and inshore series hull designs, every Sailfish boat offers outstanding performance, soft ride and fuel efficiency.

Style and comfort are also crucial ingredients of the boating experience. Every model we build is functional and user friendly, incorporating as much storage as possible, maximizing available seating positions and offering multiple options and accessories. A variety of colors, trim levels, and outstanding modern styling make Sailfish boats stand out from the pack.

We thank you for considering our line of Sailfish boats for your next purchase. Examine closely, the features, quality of construction, and attention to design and detail we incorporate into every boat we build.

DEMAND THE  
**SAILFISH**

# < DEMAND A SAILFISH BOAT

THERE IS A DIFFERENCE IN SALTWATER BOATS.

The outside of a boat, the part you can see and touch is often indicative of the quality you find inside. Every Sailfish model stands above the rest when you compare our outstanding fit, finish and design. However it's the things you cannot see that are vitally important to safety, ease of maintenance, and long term value.

At Sailfish, we use only the best resins and modern fiberglass materials to insure maximum strength and durability. Premium gel coats are used in all exterior applications, selected for the quality of finish they produce and long lasting protection from the elements. All core materials are warranted against rot for the life of the boat, and bonded into the primary laminate, for the ultimate in strong modern construction.

Hulls and decks are joined by stainless fasteners and synthetic marine adhesives, which combine to create one unit, capable of lasting a lifetime. Stainless fasteners are Gem Lux coated for maximum corrosion resistance, and long-term service.

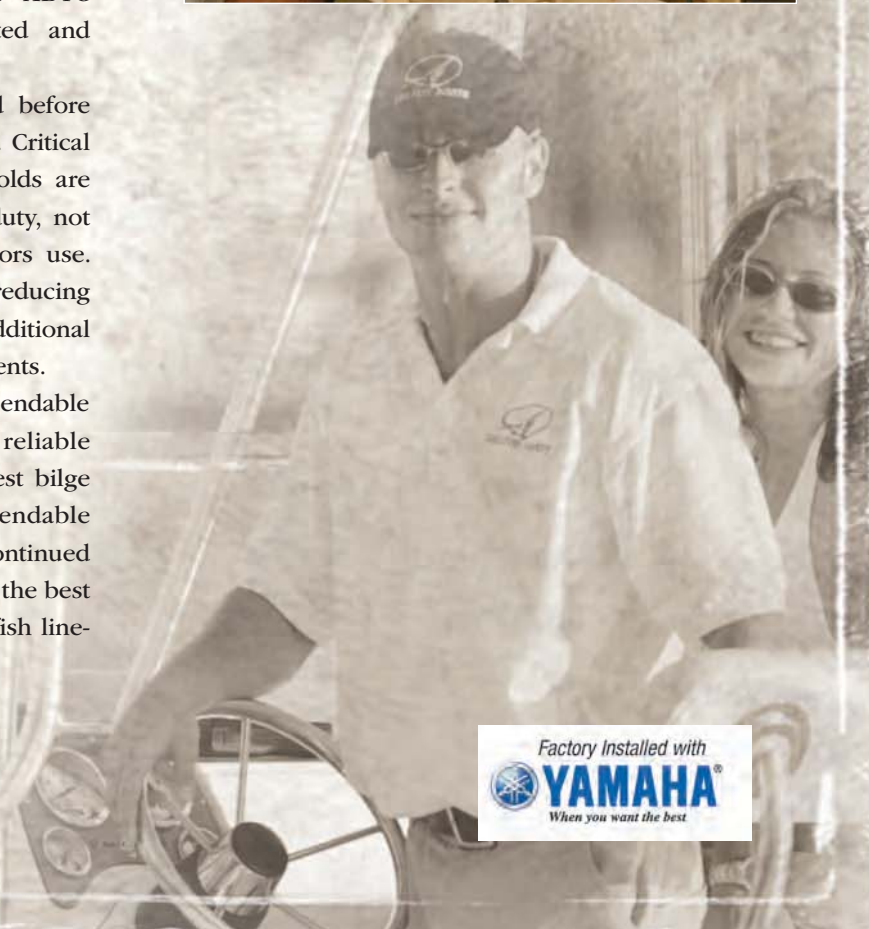
Our SAILTECH construction combines composite transoms, stringers and bulkheads into one cohesive unit, maximizing strength and durability, while minimizing flex. Electrical systems are manufactured to strict ABYC standards, and all electrical functions are tested and approved on every boat we manufacture.

Each of our fuel systems are pressure tested before leaving the factory to insure no leaks are present. Critical safety hardware such as rails, cleats, and handholds are thru bolted for long term durability and rough duty, not screwed down, a method many of our competitors use. Every Sailfish boat contains closed cell foam, reducing noise and vibration for a quieter ride and adding additional flotation, extending beyond Coast Guard requirements.

All Sailfish boats are factory rigged with dependable Yamaha outboard engines, matched up for reliable performance. Sailfish incorporates some of the best bilge and livewell pumps available, insuring dependable performance, and long term durability. Through continued product refinement, and unwavering effort to build the best quality and value in our class, we believe our Sailfish line-

D I F F E R E N C E

**SAILFISH**  
SAILFISHBOATS.COM





2 6 6 C C



	STANDARD	METRIC
LOA Hull Only	26'	7.92 M
Length Rigged	28'	8.53 M
Beam	9'	2.74 M
Fuel Capacity	185 GAL	700 L
Fresh Water	13 GAL	49 L
Approximate Weight	3850 LBS	1746.3 KG
Cockpit Depth Rear	28"	71.12 CM
Cockpit Depth Front	38"	96.52 CM
Max. HP w/Twins	500 HP	376 KW
STD. HP Single	250 HP	186 KW
Draft - Hull	18"	45.72 CM
Deadrise (Multi Angle)	22° - 24°	
Bridge Clearance	75"	1.91 M



CHECK OUT [sailfishboats.com](http://sailfishboats.com) FOR MORE INFORMATION



# 266CC

## OUTSTANDING FEATURES

- AGGRESSIVE 24° VARIABLE DEADRISE HULL
- AVAILABLE FLUSHMOUNT ELECTRONICS
- AVAILABLE PORTA POTTI OR MARINE HEAD IN CONSOLE
- AVAILABLE SEATING FOR 6 OR MORE
- DEEP, OPEN COCKPIT AREA
- EASY ACCESS TO CRITICAL SYSTEMS
- EXTREME PERFORMANCE, SOFT DRY RIDE
- FRESH WATER SINK & SHOWER
- HIGH PERFORMANCE TRIM TABS
- INSULATED FISH BOXES
- MULTIPLE COLOR OPTIONS
- MULTIPLE FISHING OPTIONS AVAILABLE
- OFFSHORE CLASS ANCHOR LOCKER
- PROFESSIONAL GRADE LIVEWELLS
- SAFETY COMFORT AND STYLE BUILT IN
- TOURNAMENT CLASS ACCESSORIES AVAILABLE
- UNOBTRUSIVE FRONT SAFETY RAILS
- WIDE BODY 9 FOOT BEAM
- WORLD CLASS HARDWARE



High performance, soft dry ride, and big water capability have made the Sailfish 266 a bestseller in offshore fishing. Its variable deadrise hull, wide body design, and functional layout, make for an outstanding fishing package. Revered by amateurs and professional's alike the 266 is a world class contender. No detail has been overlooked where safety, comfort, and function is concerned. Built tough for the rigors of offshore fishing the Sailfish 266 CC is the best value in its class.



# 238CC

## OUTSTANDING FEATURES

- 2 AVAILABLE TOURNAMENT FISHING OPTION PACKAGES.
- 500 HORSEPOWER CAPABILITY
- 60 GALLON TOURNAMENT LIVEWELL
- AGGRESSIVE 24° VARIABLE DEADRISE HULL
- AVAILABLE FLUSH MOUNT ELECTRONICS
- AVAILABLE PORTA POTTI OR MARINE HEAD IN CONSOLE
- AVAILABLE SEATING FOR 6 OR MORE
- CUSHIONED 94 QT. CARRY ON/OFF COOLER
- DEEP, OPEN COCKPIT AREA
- ELIGIBLE IN 23 AND UNDER SKA TOURNAMENT SERIES
- EXTRA CAPACITY 5 GAL. OIL TANK EACH ENGINE
- EXTREME PERFORMANCE, SOFT DRY RIDE
- FUEL USAGE AND MANAGEMENT MONITOR (TWIN)
- HIGH PERFORMANCE TRIM TABS
- INSULATED FISH BOXES
- KING FISH RODHOLDERS ON AVAILABLE T TOP
- KING FISH TOURNAMENT EDITION PLACARD
- MULTIPLE STANDARD AND CUSTOM COLOR OPTIONS
- OFFSHORE CLASS ANCHOR LOCKER
- TOURNAMENT GRADE HARDWARE
- UNOBTUSIVE FRONT BOW SAFETY RAILS
- WIDE BODY 9 FOOT BEAM



Designed for the hardcore offshore angler, where performance, function, and durability are mandatory, the Sailfish 238 blends all the necessary ingredients into one superb package. With up to 500 HP to draw on, Deep-V variable deadrise hull, and available options to please any angler, the 238 is the leading contender in its class. Eligible for the 23 and under S.K.A tournament series, and equipped to win, the Sailfish 238 will give you an edge over the competition.



## OWNER INPUT

238 CC owner and S.K.A. competitor, Greg Holmstrom, remarked at the 2003 S.K.A. Nationals, that leaving the West Delta of Louisiana going toward Biloxi Mississippi for the weigh in.



*"Once we reached open water, we separated and in a few minutes I realized the rest of the group was over the horizon behind us, unable to keep up."*

2 3 8 C C



	STANDARD	METRIC
LOA Hull Only	26'	7.92 M
Length Rigged	28'	8.53 M
Beam	9'	2.74 M
Fuel Capacity	185 GAL	700 L
Fresh Water	13 GAL	49 L
Approximate Weight	3850 LBS	1746.3 KG
Cockpit Depth Rear	28"	71.12 CM
Cockpit Depth Front	38"	96.52 CM
Max. HP w/Twins	500 HP	376 KW
STD. HP Single	250 HP	186 KW
Draft - Hull	18"	45.72 CM
Deadrise (Multi Angle)	22° - 24°	
Bridge Clearance	75"	1.91 M
	w/o T-Top	



CHECK OUT [sailfishboats.com](http://sailfishboats.com) FOR MORE INFORMATION



2 3 6 C C

	STANDARD	METRIC
LOA Hull Only	23' 6"	7.16 M
Length Rigged	25' 6"	7.77 M
Beam	9'	2.74 M
Fuel Capacity	120 GAL	454 L
Fresh Water	13 GAL	49 L
Approximate Weight	3450 LBS	1565 KG
Cockpit Depth Rear	29"	73.66 CM
Cockpit Depth Front	38"	96.52 CM
Max. Horsepower	250 HP	186 KW
Draft - Hull	18"	45.72 CM
Deadrise (Multi Angle)	22° - 24°	
Bridge Clearance	75"	1.91 M



CHECK OUT [sailfishboats.com](http://sailfishboats.com) FOR MORE INFORMATION





# 236CC

## OUTSTANDING FEATURES

- AGGRESSIVE 24° VARIABLE DEADRISE HULL
- AVAILABLE FLUSH MOUNT ELECTRONICS
- AVAILABLE PORTA POTTI OR MARINE HEAD IN CONSOLE
- AVAILABLE SEATING FOR 6 OR MORE
- DEEP, OPEN COCKPIT AREA
- EASY ACCESS TO CRITICAL SYSTEMS
- EXTREME PERFORMANCE, SOFT DRY RIDE
- INSULATED FISH BOXES
- MULTIPLE COLOR OPTIONS
- MULTIPLE FISHING OPTIONS AVAILABLE
- OFFSHORE CLASS ANCHOR LOCKER
- PROFESSIONAL GRADE LIVEWELLS
- SAFETY COMFORT AND STYLE BUILT IN
- TOURNAMENT CLASS ACCESSORIES AVAILABLE
- UNOBTRUSIVE FRONT SAFETY RAILS
- WIDE BODY 9 FOOT BEAM



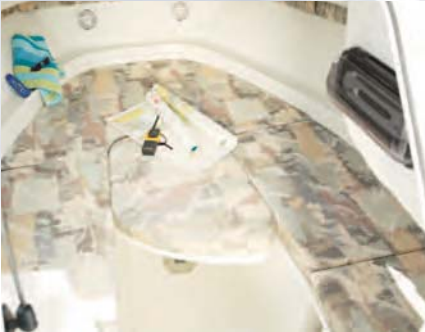
The Sailfish 236 CC has become one of the most popular offshore fishing boats in history by combining tremendous performance with outstanding features. Multiple color options, fishing package upgrades, and a variety of helm seat configurations allow the owner to customize their 236 to fit any need. The 236, provides the size, versatility, safety and comfort, to make long days on the water an enjoyable experience.



# 234WAC

## OUTSTANDING FEATURES

- AFT COCKPIT BOLSTERS, FOR YOUR FISHING COMFORT
- AFT DECK MOUNTED SST ROD HOLDERS (4)
- AVAILABLE SEATING FOR 6 OR MORE
- BAIT PREP STATION WITH FRESH WATER SHOWER
- BUILT-IN AM/FM CD STEREO SYSTEM
- BUILT-IN ROD STORAGE TO ACCOMMODATE 6 RODS
- BUILT-IN TACKLE BOX
- BUILT-IN, HIDE-A-WAY, TELESCOPING BOARDING LADDER
- BUILT-IN, INSULATED STORAGE BOXES UNDER HELM SEATING (2)
- CONCEALED PORTA POTTI
- FULL GALLEY WITH ICE BOX, FRESHWATER SINK & BUTANE STOVE
- MACERATED FISH / STORAGE BOXES, IN THE FLOOR (2)
- OPTIONAL NAVIGATIONAL ELECTRONICS AT THE HELM
- SPACIOUS CABIN V-BERTH TABLE, CUSHIONS & FILLER CUSHION
- VERSATILE 18° DEADRISE HULL



With the biggest cabin in its class, all the standard fishing equipment you'll ever need and multiple comfort and convenience options and accessories available, the Sailfish 234 WAC cuddy is a versatile and comfortable package. Equipped with standard galley, stove, ice box and Porta Potti the 234 WAC is a great weekender, for cruising camping or fishing. Choose from the available bimini or hard tops, with all weather enclosures for year round boating, and enter a new era of boating pleasure.



# 2 3 4 W A C



	STANDARD	METRIC
LOA Hull Only	23' 9"	7.24 M
Length Rigged	25' 9"	7.85 M
Beam	8' 6"	2.59 M
Fuel Capacity	120 GAL	454 L
Fresh Water	9 GAL	34 L
Approximate Weight	3600 LBS	1633 KG
Max Horsepower	250 HP	186 KW
Draft (Engine up)	15"	38.10 CM
Deadrise	18°	18°
Bridge Clearance	88"	2.24 M



CHECK OUT [sailfishboats.com](http://sailfishboats.com) FOR MORE INFORMATION



## 218 CC

	STANDARD	METRIC
LOA Hull Only	21' 3"	6.48 M
Length Rigged	23' 2"	7.06 M
Beam	8' 6"	2.59 M
Fuel Capacity	100 GAL	379 L
Fresh Water	6.5 GAL	24.6 L
Approximate Weight	3000 LBS	1565 KG
Cockpit Depth Rear	26"	66.04 CM
Cockpit Depth Front	32"	81.28 CM
Max Horsepower	225 HP	168 KW
Draft - Hull	18"	45.72 CM
Deadrise (Multi Angle)	22° - 24°	
Bridge Clearance	74"	1.88 M



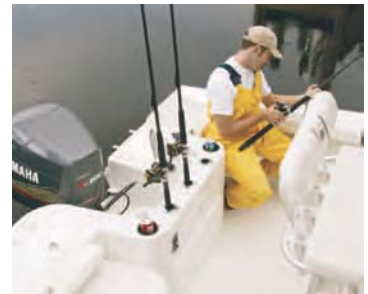
CHECK OUT [sailfishboats.com](http://sailfishboats.com) FOR MORE INFORMATION



# 218CC

## OUTSTANDING FEATURES

- 19 AVAILABLE ROD HOLDERS
- 26" MINIMUM DEPTH COCKPIT
- 6 STANDARD CUP HOLDERS
- AGGRESSIVE 24° VARIABLE DEADRISE HULL
- AVAILABLE CONCEALED PORTA POTTI
- AVAILABLE SEATING FOR 8 OR MORE
- AVAILABLE FLUSH MOUNT ELECTRONICS
- EASY ACCESS TO CRITICAL SYSTEMS
- EXTREME PERFORMANCE, SOFT DRY RIDE
- INSULATED FISH BOXES
- INTEGRATED STANDARD BOARDING LADDER
- MULTIPLE COLOR OPTIONS
- MULTIPLE HELM SEAT OPTIONS
- PROFESSIONAL GRADE LIVEWELL
- TRUE OFF SHORE CAPABILITY
- UNOBTRUSIVE FRONT BOW SAFETY RAILS



As the newest member of the Sailfish offshore family, the 218 represents an evolution in saltwater fishing boats. Every square inch of the 218 was designed by fishing boat experts, with input from thousands of anglers like you. Features like the integrated boarding ladder, helm front seating, cup holders, rod holders, surface mount battery switches. All the qualities that makes Sailfish a leader in offshore fishing, are here in one outstanding package. Combine that with the highest performing hull in the industry and a legend is born. "No other 21 foot center console compares."





2 0 6 C C



	STANDARD	METRIC
LOA Hull Only	20' 2"	6.15 M
Length Rigged	22' 2"	6.76 M
Beam	91"	2.31 M
Fuel Capacity	66 GAL	250 L
Approximate Weight	2100 LBS	953 KG
Max. Horsepower	200 HP	149 KW
Draft	12"	53.34 CM
Deadrise	Variable	Variable
Bridge Clearance	68"	1.73 M



CHECK OUT [sailfishboats.com](http://sailfishboats.com) FOR MORE INFORMATION



# 206CC

## OUTSTANDING FEATURES

- 21-GALLON BAITWELL WITH CUSHION
- AFT COCKPIT BOLSTERS, FOR YOUR FISHING COMFORT
- AFT DECK MOUNTED SST ROD HOLDERS
- AVAILABLE FRESH WATER SHOWER
- AVAILABLE MULTIPLE STYLE HELM SEATING
- AVAILABLE NAVIGATIONAL ELECTRONICS AT THE HELM
- AVAILABLE PORTA POTTI CONSOLE
- AVAILABLE SEATING FOR 6
- BAIT PREP STATION
- EXTREME PERFORMANCE, SOFT DRY RIDE
- HAUS PIPES WITH STAINLESS CLEATS
- HYDRAULIC STEERING WITH STAINLESS STEERING WHEEL
- IN FLOOR STORAGE COMPARTMENT
- INSULATED FISH / STORAGE BOXES (2)
- OPTIONAL HULL COLORS
- RECESSED ROD STORAGE TO ACCOMMODATE 6 RODS
- VARIABLE DEGREE DEADRISE HULL
- WORLD CLASS HARDWARE



The Sailfish 206 CC may be the best laid out fishing boat in America today. Every inch is designed for maximum efficiency, function and style. With its amazing variable deadrise hull, the 206 offers high speed rough water performance unmatched by any boat this size. This unique hull design is equally at home in the flats and bays, with its shallow draft and stable stance. Available features and performance that rival its big offshore brothers the Sailfish 206 CC is a world class fishing machine that has become a legend in its own time.



# 2100 BAY BOAT

## OUTSTANDING FEATURES

- 14 INTEGRATED ROD HOLDERS
- 21 INCH COCKPIT DEPTH
- 21ST CENTURY DESIGN
- 3 AVAILABLE FISH SEAT BASES
- 60 INCH INSULATED FISH BOX
- AVAILABLE CONSOLE LIVE WELL
- AVAILABLE FLUSH MOUNT ELECTRONICS
- AVAILABLE RELEASE LIVE WELL
- AVAILABLE SEATING FOR 8
- AVAILABLE TROLLING MOTOR AND CHARGER
- BUILT IN TACKLE BOX
- EASY ACCESS TO CRITICAL SYSTEMS
- HANGING ANCHOR LOCKER
- LOCKING STORAGE COMPARTMENTS
- MULTIPLE HELM SEAT CHOICES
- REAR DECK CENTRAL LIVEWELL
- SPACIOUS UNDER DECK STORAGE
- VERSATILE 18° DEADRISE HULL
- WIDE BODY OPEN COCKPIT



The most versatile 21 footer on the market the Sailfish 2100 with its 21st century design is equally at home in fresh or saltwater, inshore or offshore. The aggressive 18° hull deadrise means a soft ride in big water, while the wide beam allows shallow draft on the flats and bay. Large front and rear fishing decks, 21" deep cockpit and the most storage in class make the 2100 an angler's dream. With multiple helm seat/leaning post available, 3 livewell capability, and a host of options and accessories, the Sailfish 2100 can be tailored to fit your needs, in comfort and style.

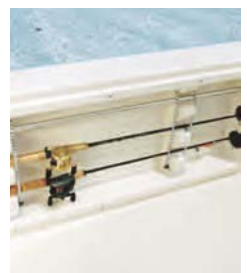




# 2100 BAY BOAT



	STANDARD	METRIC
LOA Hull Only	21'	6.40 M
Length Rigged	23'	7.01 M
Beam	8' 6"	2.59 M
Fuel Capacity	68 GAL	257.40 L
Max. Horsepower	225 HP	168 KW
Draft - Hull	13.5"	34.29 CM
Battery Capacity	4	
Rodholders	14	
Deadrise	18°	
Bridge Clearance	65"	1.65 M



CHECK OUT [sailfishboats.com](http://sailfishboats.com) FOR MORE INFORMATION

# 1900 BAY BOAT

## OUTSTANDING FEATURES

- 12 INTEGRATED ROD HOLDERS
- 21 INCH COCKPIT DEPTH
- 21ST CENTURY DESIGN
- 3 AVAILABLE FISH SEAT BASES
- 5 STANDARD CUP HOLDERS
- 60 INCH INSULATED FISH BOX
- AVAILABLE FLUSHMOUNT ELECTRONICS ON HELM
- AVAILABLE SEATING FOR 8
- AVAILABLE RELEASE LIVE WELL
- BUILT IN TACKLE BOX
- CONSOLE LIVE WELL
- HANGING ANCHOR LOCKER
- INTEGRATED BOARDING LADDER
- INTEGRATED TROLLING MOTOR PAD
- REMOVEABLE IGLOO COOLER HELM SEAT
- STAINLESS PASSENGER GRAB HANDLES
- SURFACE MOUNT BATTERY SWITCH
- VERSATILE 18° DEADRISE HULL
- WIDE BODY OPEN COCKPIT



The Sailfish 1900 has brought the bay boat into the 21st century. An aggressive 18° deadrise hull, 21" deep sides and enough storage to accommodate a full days needs, the 1900 is the most versatile 19' boat in its class. With available seating for 8, integrated boarding ladder, and all the fishing features you, the boater, demanded. Equally at home in the bay or offshore, the 1900 is the product of input from both the professional angler, and the family boater.



# 1900 BAY BOAT



	STANDARD	METRIC
LOA Hull Only	19'	5.79 M
Length Rigged	21'	6.40
Beam	8' 6"	2.59 M
Fuel Capacity	52 GAL	197.08 L
Max. Horsepower	150 HP	112 KW
Draft - Hull	12.5"	34.29 CM
Battery Capacity	4	
Rodholders	12	
Deadrise	18°	
Bridge Clearance	65"	1.65 M



CHECK OUT [sailfishboats.com](http://sailfishboats.com) FOR MORE INFORMATION

# 198CC

## OUTSTANDING FEATURES

- 16" DEADRISE FOR A SOFT DRY RIDE
- AFT DECK MOUNTED ROD HOLDERS
- AVAILABLE SEATING FOR UP TO 6
- COOLER 72 QUART WITH CUSHION
- ERGONOMICALLY DESIGNED HELM WITH FULL INSTRUMENTATION
- IN FLOOR STORAGE COMPARTMENT
- INSULATED FISH / STORAGE BOXES
- INTEGRATED BAITWELL & HELM SEATING
- LOCKABLE STORAGE UNDER THE HELM
- NO FEED BACK STEERING WITH STAINLESS STEERING WHEEL
- OPTIONAL HULL COLORS
- OPTIONAL NAVIGATIONAL ELECTRONICS AT THE HELM
- RECESSED CUP HOLDERS (4)
- RECESSED ROD STORAGE TO ACCOMMODATE 4 RODS



If you are looking for a mid sized package with big boat features, then the 198 CC fits the bill. With insulated fish box, standard raw water live well, seating for up to 6, and abundant rod holders, the 198 CC is ready for action. The large front casting deck is well suited make for cast netting and sight fishing, and multiple options and accessories allow you to equip your 198 CC exactly the way you want. The unique 2 piece console allows for ample dry storage, and additional storage below the front deck keeps your essentials close at hand.



# 198 CC



	STANDARD	METRIC
LOA Hull Only	19' 2"	5.84 M
Length Rigged	21' 2"	6.43 M
Beam	92"	2.34 M
Fuel Capacity	52 GAL	197 L
Approximate Weight	1550 LBS	703 KG
Max. Horsepower	150 HP	112 KW
Draft	12"	30.48 CM
Deadrise	16°	16°
Bridge Clearance	68"	1.73 M



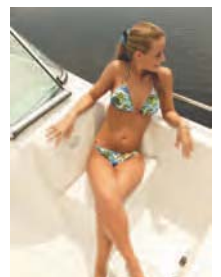
CHECK OUT [sailfishboats.com](http://sailfishboats.com) FOR MORE INFORMATION



1 9 8 D C



	STANDARD	METRIC
LOA Hull Only	19' 2"	5.84 M
Length Rigged	21' 2"	6.43 M
Beam	92"	2.34 M
Fuel Capacity	52 GAL	197 L
Approximate Weight	1650 LBS	748.4 KG
Max. Horsepower	150 HP	112 KW
Draft	12"	30.48 CM
Deadrise	16°	16°
Bridge Clearance	68"	1.73 M



CHECK OUT [sailfishboats.com](http://sailfishboats.com) FOR MORE INFORMATION



# 198DC

## OUTSTANDING FEATURES

- AFT DECK MOUNTED ROD HOLDERS
- AVAILABLE FRONT BOW CUSHION
- AVAILABLE SEATING FOR 6 OR MORE
- CD/STEREO SYSTEM
- ERGONOMICALLY DESIGNED HELM WITH FULL INSTRUMENTATION
- IN FLOOR STORAGE COMPARTMENT (2)
- INSULATED COOLER / STORAGE UNDER BOW SEATING (2)
- INSULATED FISH / STORAGE BOX
- INTEGRATED ROD HOLDERS FOR 4
- OPTIONAL HULL COLORS
- OPTIONAL NAVIGATIONAL ELECTRONICS AT THE HELM
- RECESSED CUP HOLDERS (4)
- STORAGE COMPARTMENTS UNDER BOTH CONSOLES
- VERSATILE 16° DEADRISE HULL



The 198 DC fits whatever mood you may be in, from fresh to saltwater, from fishing to skiing, or just plain cruising around, the Sailfish 198 DC will do it all. With standard baitwell, rod storage galore, insulated fish box and large front casting deck the 198 DC fishes in style. The twin consoles, wrap around windshield, front and rear jump seats and abundant storage, makes for a great family boat that's comfortable and versatile. With multiple available options and accessories, the Sailfish 198 DC is designed for your boating lifestyle.



188CC



186CC





# 188CC

## OUTSTANDING FEATURES

- 16° DEADRISE FOR A SOFT DRY RIDE
- AFT DECK MOUNTED ROD HOLDERS
- AVAILABLE BOW CUSHION
- AVAILABLE ELECTRIC TROLLING MOTOR
- AVAILABLE SEATING FOR UP TO 6
- CONSOLE STORAGE SEAT WITH CUSHION
- DIVIDED INSULATED FISH / STORAGE BOXES (2)
- ERGONOMICALLY DESIGNED HELM WITH FULL INSTRUMENTATION
- FLIP FLOP COOLER HELM SEAT
- LOCKABLE STORAGE UNDER THE CONSOLE
- NO FEED BACK STEERING WITH STAINLESS STEERING WHEEL
- OPTIONAL HULL COLORS
- OPTIONAL NAVIGATIONAL ELECTRONICS AT THE HELM
- RECESSED CUP HOLDERS
- RECESSED ROD STORAGE



The 188 CC is a true fishing machine. From the insulated fish box to the rear mounted rod holders, every inch of the 188 is designed to meet your fishing needs. Recessed rod storage, hanging anchor locker, a well designed cockpit and one of the largest bait wells in its class give the 188 more features and yet more fishing room than any other 18' boat. A great shallow water performer, the 188 CC will also run the bays like a pro. With more standard equipment, the Sailfish 188 CC is a class by itself.

	STANDARD	METRIC
LOA Hull Only	18'	5.49 M
Length Rugged	20'	6.10 M
Beam	92"	2.34 M
Fuel Capacity	52 GAL	197 L
Approximate Weight	1350 LBS	612.3 KG
Max. Horsepower	130 HP	97 KW
Draft	12"	30.48 CM
Deadrise	16°	16°
Bridge Clearance	68"	1.73 M



# 186CC

## OUTSTANDING FEATURES

- 16° DEADRISE FOR A SOFT DRY RIDE
- 72 QT. COOLER WITH CUSHION
- INSULATED FISH / STORAGE BOXES
- AFT DECK MOUNTED ROD HOLDERS
- AVAILABLE BOW CUSHION
- AVAILABLE ELECTRIC TROLLING MOTOR
- AVAILABLE REAR JUMP SEAT CUSHIONS
- AVAILABLE SEATING FOR UP TO 6
- ERGONOMICALLY DESIGNED HELM WITH FULL INSTRUMENTATION
- LOCKABLE STORAGE UNDER THE CONSOLE
- NO FEED BACK STEERING WITH STAINLESS STEERING WHEEL
- OPTIONAL HULL COLORS
- OPTIONAL NAVIGATIONAL ELECTRONICS AT THE HELM
- RECESSED CUP HOLDERS
- RECESSED ROD STORAGE
- TWIN CAPTAIN CHAIRS AT THE HELM



If you are looking for a mid-sized package with big boat features, then the 186 CC fits the bill. With insulated fish box, standard raw water live well, seating for up to 6, and abundant rod holders, the 186 CC is ready for action. The large front casting deck and split low profile bow rails, make for snag free cast netting. Available options and accessories allow you to equip your 186 CC to best suit your fishing style. The unique 2 piece console allows for ample dry storage, and is well suited for stand up operation.

	STANDARD	METRIC
LOA Hull Only	18'	5.49 M
Length Rugged	20'	6.10 M
Beam	92"	2.34 M
Fuel Capacity	52 GAL	197 L
Approximate Weight	1350 LBS	612.3 KG
Max. Horsepower	130 HP	97 KW
Draft	12"	30.48 CM
Deadrise	16°	16°
Bridge Clearance	68"	1.73 M



CHECK OUT [sailfishboats.com](http://sailfishboats.com) FOR MORE INFORMATION



# 174 CC

	STANDARD	METRIC
LOA Hull Only	17' 2"	5.23 M
Length Rigged	19' 2"	5.84 M
Beam	84"	2.13 M
Fuel Capacity	30 GAL	114 L
Approximate Weight	1150 LBS	522 KG
Max. Horsepower	90 HP	86 KW
Draft	9"	22.86 CM
Deadrise	15°	15°
Bridge Clearance	54"	1.37 M



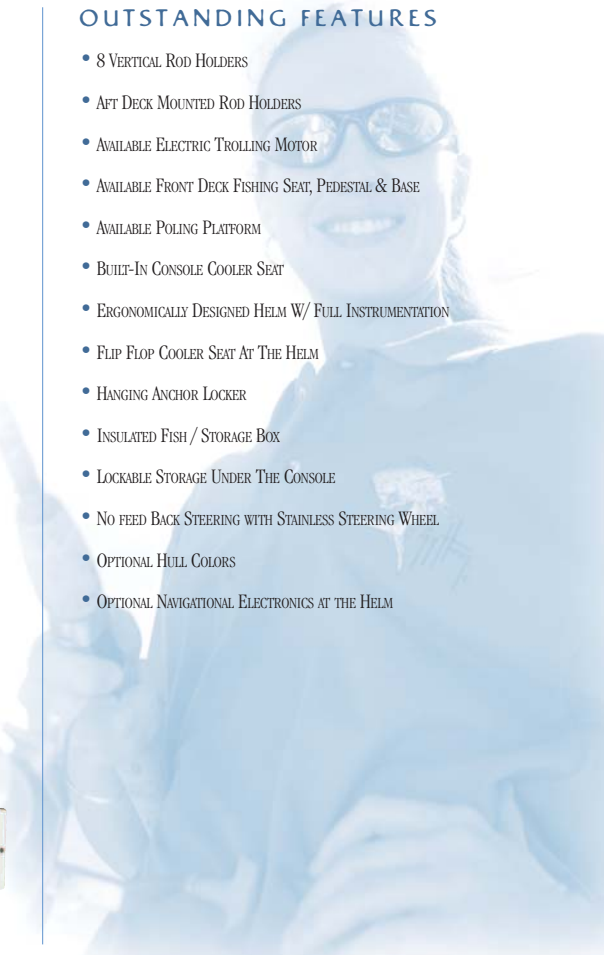
CHECK OUT [sailfishboats.com](http://sailfishboats.com) FOR MORE INFORMATION



# 174CC

## OUTSTANDING FEATURES

- 8 VERTICAL ROD HOLDERS
- AFT DECK MOUNTED ROD HOLDERS
- AVAILABLE ELECTRIC TROLLING MOTOR
- AVAILABLE FRONT DECK FISHING SEAT, PEDESTAL & BASE
- AVAILABLE POLING PLATFORM
- BUILT-IN CONSOLE COOLER SEAT
- ERGONOMICALLY DESIGNED HELM W/ FULL INSTRUMENTATION
- FLIP FLOP COOLER SEAT AT THE HELM
- HANGING ANCHOR LOCKER
- INSULATED FISH / STORAGE BOX
- LOCKABLE STORAGE UNDER THE CONSOLE
- NO FEED BACK STEERING WITH STAINLESS STEERING WHEEL
- OPTIONAL HULL COLORS
- OPTIONAL NAVIGATIONAL ELECTRONICS AT THE HELM



Designed for the bays and backwaters the Sailfish 174 CC is the top of the line in 17' V-bottoms. Low profile split bow rails allow for snag free cast netting. Add the available poling platform or trolling motor and the Sailfish 174 becomes a versatile platform for any inshore fishing action you desire. Insulated fish boxes, raw water live well, and more standard equipment than any boat in its class make the 174 CC an outstanding package.



# 170 CC

## OUTSTANDING FEATURES

- AFT DECK MOUNTED ROD HOLDERS
- AVAILABLE ELECTRIC TROLLING MOTOR
- AVAILABLE FRONT DECK FISHING SEAT, PEDESTAL & BASE
- BUILT-IN CONSOLE COOLER SEAT
- ERGONOMICALLY DESIGNED HELM WITH FULL INSTRUMENTATION
- FLIP FLOP COOLER SEAT AT THE HELM
- INSULATED FISH / STORAGE BOX
- LOCKABLE STORAGE UNDER THE CONSOLE
- NO FEED BACK STEERING WITH STAINLESS STEERING WHEEL
- OPTIONAL HULL COLORS
- OPTIONAL NAVIGATIONAL ELECTRONICS AT THE HELM
- VARIABLE DEADRISE FOR A SOFT DRY RIDE
- VERTICAL ROD HOLDERS



The most popular boat in Sailfish history the 170 CC with its classic looks and outstanding performance, continues to be an angler's favorite. Extremely stable, and spacious, the 170 CC is equally at home in fresh or salt water. With a variety of fishing options, accessories, multiple seating, and electronics packages available, the Sailfish 170 CC can be custom tailored to fit your fishing needs.



1 7 0 C C



	STANDARD	METRIC
LOA Hull Only	16' 11"	5.16 M
Length Rigged	18' 11"	5.77 M
Beam	80"	2.03 M
Fuel Capacity	30 GAL	114 L
Approximate Weight	1050 LBS	476 KG
Max. Horsepower	90 HP	76 KW
Draft	9"	22.86 CM
Deadrise	Variable	Variable
Bridge Clearance	51"	1.29 M



CHECK OUT [sailfishboats.com](http://sailfishboats.com) FOR MORE INFORMATION



# STANDARD & OPTIONAL EQUIPMENT

266 CC    238 CC    236 CC    234 WAC    218 CC    206 CC    2100 BAY    1900 BAY    198 CC    198 DC    188 CC    186 CC    174 CC    170 CC

ELECTRICAL															
12 VOLT DC ACCESSORY PLUG	STD	STD	STD	STD	STD	STD	STD	STD	STD	STD	STD	STD	STD	STD	STD
ACCESSORY SWITCH PANEL W/CIRCUIT BREAKERS	STD	STD	STD	STD	STD	STD	STD	STD	STD	STD	STD	STD	STD	STD	STD
BATTERY SWITCH DUAL/SINGLE	D	D	D	D	D	D	D	D	D	S	S	S	S	S	S
BUILT-IN BATTERY CHARGER	OPT	OPT	OPT	OPT	OPT	OPT	OPT	OPT	OPT	OPT	OPT	OPT	OPT	OPT	OPT
COCKPIT COURTESY LIGHTS	STD	STD	STD	STD	STD	STD	STD	STD	STD	STD	STD	STD	STD	N/A	N/A
COMPASS	STD	STD	STD	STD	STD	STD	STD	OPT	OPT	STD	STD	STD	STD	OPT	OPT
ELECTRIC HORN	STD	STD	STD	STD	STD	STD	STD	STD	STD	STD	STD	STD	STD	STD	STD
ENGINE(S) EMERGENCY SHUT-OFF SWITCH	STD	STD	STD	STD	STD	STD	STD	STD	STD	STD	STD	STD	STD	STD	STD
FULL INSTRUMENTATION	STD	STD	STD	STD	STD	STD	STD	STD	STD	STD	STD	STD	STD	STD	STD
FULL INSTRUMENTATION WITH YAMAHA GAUGES	STD	STD	STD	OPT	OPT	OPT	OPT	OPT	OPT	OPT	OPT	OPT	OPT	OPT	OPT
STEREO AM/FM WITH CD PLAYER	OPT	OPT	OPT	STD	OPT	OPT	OPT	OPT	OPT	OPT	STD	OPT	OPT	OPT	OPT
STEREO AM/FM/CD PLAYER W/SIRIUS SATELLITE RECEIVER	OPT	OPT	OPT	OPT	OPT	OPT	OPT	OPT	OPT	OPT	OPT	OPT	OPT	OPT	OPT
PLUMBING															
AUTOMATIC BILGE PUMP	2/STD	2/STD	2/STD	2/STD	STD	STD	STD	STD	STD	STD	STD	STD	STD	STD	STD
AUTOMATIC BILGE PUMP ADDITIONAL	OPT	OPT	N/A	N/A	N/A	N/A	N/A	N/A	N/A	N/A	N/A	N/A	N/A	N/A	N/A
BRONZE GARBOARD DRAIN PLUG	STD	STD	STD	STD	STD	STD	STD	STD	STD	STD	STD	STD	STD	STD	STD
FRESHWATER SHOWER	STD	STD	STD	STD	OPT	OPT	N/A	N/A	N/A	N/A	N/A	N/A	N/A	N/A	N/A
FUEL FILTER/WATER SEPARATOR	STD	STD	STD	STD	STD	OPT	STD	STD	OPT	OPT	OPT	OPT	OPT	OPT	OPT
HIGH SPEED LIVEWELL PICKUP	STD	STD	STD	STD	STD	STD	STD	STD	N/A	N/A	N/A	N/A	N/A	N/A	N/A
MARINE HEAD WITH HOLDING TANK	OPT	OPT	OPT	N/A	OPT	N/A	N/A	N/A	N/A	N/A	N/A	N/A	N/A	N/A	N/A
PORTABLE MARINE HEAD	OPT	OPT	OPT	STD	OPT	OPT	OPT	OPT	OPT	OPT	OPT	OPT	OPT	OPT	OPT
RAW WATER WASHDOWN	STD	STD	STD	STD	STD	STD	STD	STD	STD	STD	STD	STD	STD	STD	STD
SELF BAILING COCKPIT	STD	STD	STD	STD	STD	STD	STD	STD	STD	STD	STD	STD	STD	OPT	OPT
HARDWARE															
MARINE GRADE HARDWARE - STAINLESS STEEL	STD	STD	STD	STD	STD	STD	STD	STD	STD	STD	STD	STD	STD	STD	STD
BOW ANCHOR ROLLER	OPT	OPT	OPT	STD	OPT	N/A	N/A	N/A	N/A	N/A	N/A	N/A	N/A	N/A	N/A
ENGRAVED TRANSOM PLATE	STD	STD	STD	STD	STD	STD	STD	STD	STD	STD	STD	STD	STD	STD	STD
FLUSH MOUNTED BOW LIGHT	OPT	OPT	OPT	N/A	OPT	OPT	N/A	N/A	OPT	OPT	OPT	OPT	OPT	OPT	OPT
FLUSH MOUNTED CLEATS	OPT	OPT	OPT	OPT	OPT	OPT	OPT	OPT	OPT	OPT	OPT	OPT	OPT	OPT	OPT
FLUSH MOUNTED HINGES & DECK PLATES	STD	STD	STD	STD	STD	STD	STD	STD	STD	STD	STD	STD	STD	STD	N/A
HEAVY DUTY RUB RAIL	STD	STD	STD	STD	STD	STD	STD	STD	STD	STD	STD	STD	STD	STD	STD
HEAVY DUTY STAINLESS STEEL RUB RAIL	OPT	OPT	OPT	OPT	OPT	OPT	OPT	OPT	OPT	OPT	OPT	OPT	OPT	OPT	OPT
HEAVY DUTY STAINLESS STEEL BOW & STERN EYES	STD	STD	STD	STD	STD	STD	STD	STD	STD	STD	STD	STD	STD	STD	STD
STAINLESS FULL BOW RAIL	OPT	OPT	OPT	STD	OPT	OPT	OPT	OPT	OPT	STD	OPT	OPT	OPT	OPT	STD
STAINLESS LOW PROFILE SPORT BOW RAIL	STD	STD	STD	N/A	STD	OPT	N/A	N/A	N/A	N/A	N/A	N/A	N/A	N/A	N/A
STAINLESS SPLIT BOW RAIL	N/A	N/A	N/A	N/A	N/A	N/A	OPT	OPT	STD	OPT	STD	STD	STD	STD	OPT
STAINLESS STEEL & BRONZE THRU HULL FITTINGS	STD	STD	STD	STD	STD	OPT	STD	STD	OPT	OPT	OPT	OPT	OPT	OPT	OPT
STAINLESS STEEL PROPELLER(S)	STD	STD	STD	STD	STD	STD	STD	OPT	OPT	OPT	OPT	OPT	OPT	OPT	OPT
STAINLESS STEEL ROD HOLDERS	4/STD	8/STD	4/STD	4/STD	4/STD	4/STD	8/STD	8/STD	2/STD	2/STD	2/STD	2/STD	2/STD	2/STD	2/STD
STAINLESS STEEL ROD HOLDERS ADDITIONAL PAIR	OPT	OPT	OPT	N/A	OPT	OPT	OPT	OPT	OPT	OPT	OPT	OPT	OPT	N/A	OPT
SEATING															
AFT SEATING (REMOVABLE)	OPT	OPT	OPT	OPT	OPT	STD	OPT	OPT	OPT	OPT	STD	OPT	N/A	N/A	N/A
BAITWELL CUSHION	N/A	N/A	N/A	OPT	N/A	STD	STD/OPT	STD	OPT	OPT	STD	OPT	N/A	N/A	N/A
BOW CUSHIONS	OPT	OPT	OPT	N/A	OPT	OPT	OPT	OPT	OPT	OPT	OPT	OPT	OPT	OPT	OPT
BOW CUSHION BACK REST	OPT	OPT	OPT	N/A	OPT	N/A	N/A	N/A	N/A	N/A	N/A	N/A	N/A	N/A	N/A
CONSOLE SEAT/FRONT	STD	STD	OPT	N/A	STD	STD	STD	STD	STD	STD	STD	STD	STD	STD	STD
FLIP FLOP COOLER SEAT	N/A	N/A	N/A	N/A	N/A	N/A	OPT	N/A	N/A	N/A	STD	N/A	STD	STD	STD
FISHING SEAT AND PEDESTAL POLE BOW MOUNTED	OPT	OPT	OPT	N/A	OPT	OPT	OPT	OPT	OPT	OPT	OPT	OPT	OPT	OPT	OPT
FISHING SEAT AND PEDESTAL POLE REAR MOUNTED	N/A	N/A	N/A	N/A	N/A	N/A	OPT	OPT	N/A	N/A	N/A	N/A	N/A	N/A	N/A
LEANING POST (ALUMINUM)	OPT	OPT	OPT	N/A	OPT	STD	OPT	OPT/STD	N/A	N/A	OPT	OPT	N/A	N/A	N/A
LEANING POST BACK REST FOR DELUXE ALUMINUM POST	OPT	OPT	OPT	N/A	OPT	OPT	OPT	N/A	N/A	N/A	OPT	OPT	N/A	N/A	N/A
LEANING POST DLX. W/ 4 ROD HOLDERS (ALUMINUM)	OPT	OPT	OPT	N/A	OPT	OPT	OPT	N/A	N/A	N/A	OPT	OPT	N/A	N/A	N/A
LEANING POST DLX. W/30 GALLON LIVEWELL	STD	OPT	OPT	N/A	N/A	N/A	N/A	N/A	N/A	N/A	N/A	N/A	N/A	N/A	N/A
LEANING POST DLX. W/30 GALLON LIVEWELL - BACK REST	OPT	OPT	OPT	N/A	N/A	N/A	N/A	N/A	N/A	N/A	N/A	N/A	N/A	N/A	N/A
LEANING POST DLX. W/4 ROD HOLDERS & TACKLE ORG.	OPT	OPT	OPT	N/A	OPT	OPT	N/A	N/A	N/A	N/A	N/A	N/A	N/A	N/A	N/A
LEANING POST DLX. W/60 GALLON LIVEWELL	OPT	STD	N/A	N/A	N/A	N/A	N/A	N/A	N/A	N/A	N/A	N/A	N/A	N/A	N/A
LEANING POST DLX. W/60 GALLON LIVEWELL - BACK REST	OPT	OPT	N/A	N/A	N/A	N/A	N/A	N/A	N/A	N/A	N/A	N/A	N/A	N/A	N/A
TWIN CAPTAINS CHAIRS W/REMOVABLE CUSHIONS	N/A	N/A	STD	STD	STD	OPT	OPT	N/A	STD	STD	OPT	STD	N/A	N/A	N/A
TWIN CAPTAINS CHAIR FOOT REST	N/A	N/A	OPT	OPT	OPT	OPT	OPT	N/A	N/A	N/A	OPT	OPT	N/A	N/A	N/A
STORAGE															
ANCHOR LOCKER	STD	STD	STD	STD	STD	STD	STD	STD	STD	STD	STD	STD	STD	STD	STD
BATTERY COMPARTMENT	STD	STD	STD	STD	STD	STD	STD	STD	STD	STD	STD	STD	STD	STD	STD
COOLER (72 OR 94QT.)	94/STD	94/STD	OPT	N/A	OPT	OPT	OPT	72/STD	72/STD	N/A	72/STD	72/STD	72/STD	72/STD	72/STD
DELUXE WALK IN CONSOLE / LOCKABLE	STD	STD	STD	N/A	STD	N/A	N/A	N/A	N/A	N/A	N/A	N/A	N/A	N/A	N/A
IN CONSOLE STORAGE (LOCKABLE)	STD	STD	STD	N/A	STD	STD	STD	STD	STD	STD	STD	STD	STD	STD	STD
INSULATED -FISH BOX / STORAGE	STD	STD	STD	STD	STD	STD	STD	STD	STD	STD	STD	STD	STD	STD	STD



Seminole Marine, Inc. reserves the right to discontinue models or change prices, specifications, materials, equipment, color or design at any time without incurring obligation. Weight and dimensions of all models are approximate and may vary. Options subject to change. Photographs in this brochure may contain optional equipment. 12/03.



CHECK OUT [sailfishboats.com](http://sailfishboats.com) FOR MORE INFORMATION



# STANDARD & OPTIONAL EQUIPMENT

	266 CC	238 CC	236 CC	234 WAC	218 CC	206 CC	2100 BAY	1900 BAY	198 CC	198 DC	188 CC	186 CC	174 CC	170 CC	
RECESSED CUP HOLDERS	STD	STD	STD	STD	STD	STD	STD	STD	STD	STD	STD	STD	STD	N/A	
RECESSED ROD STORAGE	STD	STD	STD	STD	STD	STD	STD	STD	STD	STD	STD	STD	STD	N/A	
RECESSED TACKLE BOX	STD	STD	STD	STD	STD	N/A	STD	STD	N/A	N/A	N/A	N/A	N/A	N/A	
RECESSED TACKLE BOX ADDITIONAL ONE	OPT	OPT	OPT	N/A	OPT	N/A	OPT	OPT	N/A	N/A	N/A	N/A	N/A	N/A	
RECESSED TOP MOUNTED CONSOLE TACKLE ORGANIZER	OPT	OPT	OPT	N/A	OPT	N/A	N/A	N/A	N/A	N/A	N/A	N/A	N/A	N/A	
VERTICAL ROD HOLDERS	4/STD	8/STD	4/STD	4/STD	4/STD	4/STD	8/STD	8/STD	4/STD	4/STD	4/STD	4/STD	10/STD	8/STD	
<b>FISHING</b>															
BAIT PREP STATION	STD	STD	STD	STD	OPT	STD	N/A	N/A	N/A	N/A	STD	N/A	N/A	N/A	
BAITWELL STANDARD / AERATED IN GALLONS	35	60	30	18	25	21	35	16	10	9	21	10	10	15	
BOW MOUNTED FISHING BOLSTER	OPT	OPT	OPT	N/A	N/A	N/A	N/A	N/A	N/A	N/A	N/A	N/A	N/A	N/A	
COCKPIT BOLSTERS (REMOVABLE)	STD	STD	STD	STD	STD	STD	N/A	N/A	N/A	N/A	N/A	N/A	N/A	N/A	
DLX. T-TOP WITH SPREADER LIGHT & ROD HOLDERS	OPT	OPT	OPT	N/A	OPT	OPT	OPT	OPT	OPT	N/A	N/A	OPT	N/A	N/A	
DLX. T-TOP WITH PFD STORAGE	STD	STD	STD	N/A	OPT	OPT	OPT	OPT	OPT	N/A	N/A	OPT	N/A	N/A	
DLX. T-TOP SPRAY CURTAINS	OPT	OPT	OPT	N/A	OPT	OPT	OPT	OPT	OPT	N/A	N/A	N/A	N/A	N/A	
DLX. T-TOP TUNA/COBIA TOWER	OPT	OPT	OPT	N/A	OPT	OPT	OPT	N/A	N/A	N/A	N/A	N/A	N/A	N/A	
ELECTRONICS BOX (FLUSHED MOUNTED IN-DASH ONLY)	OPT	OPT	OPT	N/A	OPT	N/A	OPT	OPT	N/A	N/A	N/A	N/A	N/A	N/A	
ELECTRONICS BOX (FOR OPTIONAL T-TOP ONLY)	OPT	OPT	OPT	N/A	OPT	OPT	OPT	OPT	OPT	N/A	N/A	OPT	N/A	N/A	
FISH FINDER / GPS / LOWRANCE ELECTRONICS	OPT	OPT	OPT	OPT	OPT	OPT	OPT	OPT	OPT	OPT	OPT	OPT	OPT	OPT	
INSET TOE HOLD RAIL	STD	STD	STD	N/A	N/A	N/A	N/A	N/A	N/A	N/A	N/A	N/A	N/A	N/A	
OUTRIGGERS W/15 FOOT POLES FOR T-TOP ONLY	OPT	OPT	OPT	N/A	OPT	N/A	N/A	N/A	N/A	N/A	N/A	N/A	N/A	N/A	
POLING PLATFORM	N/A	N/A	N/A	N/A	N/A	N/A	OPT	OPT	N/A	N/A	N/A	N/A	OPT	N/A	
RELEASE LIVWELL / PRO RED FISH TOURNAMENT PACK	N/A	N/A	N/A	N/A	N/A	N/A	OPT	OPT	N/A	N/A	N/A	N/A	N/A	N/A	
TROLLING MOTOR	N/A	N/A	N/A	N/A	N/A	OPT	OPT	OPT	OPT	OPT	OPT	OPT	OPT	OPT	
TROLLING MOTOR PLUG W/TRIM	N/A	N/A	N/A	N/A	N/A	OPT	OPT	OPT	OPT	OPT	OPT	OPT	OPT	OPT	
<b>BOAT</b>															
BIMINI TOP WITH BOOT	OPT	OPT	OPT	OPT	OPT	OPT	OPT	OPT	OPT	OPT	OPT	OPT	OPT	OPT	
BOW SPRAY DODGER	OPT	OPT	OPT	N/A	OPT	N/A	N/A	N/A	N/A	N/A	N/A	N/A	N/A	N/A	
BOAT COVERS	N/A	N/A	N/A	N/A	N/A	N/A	OPT	OPT	OPT	OPT	OPT	OPT	OPT	OPT	
CLOSED CELL FOAM FLOTATION	STD	STD	STD	STD	STD	STD	STD	STD	STD	STD	STD	STD	STD	STD	
COLOR HULL SIDES	OPT	OPT	OPT	OPT	OPT	OPT	OPT	OPT	OPT	OPT	OPT	OPT	OPT	OPT	
CONSOLE COVER N/A T-TOP	N/A	N/A	N/A	N/A	N/A	N/A	N/A	N/A	OPT	N/A	OPT	OPT	OPT	OPT	
DIVE LADDER / SWIM PLATFORM	OPT	OPT	OPT	STD	STD	OPT	OPT	STD	OPT	OPT	OPT	OPT	OPT	OPT	
SAILTECH COMPOSITE TRANSOM	STD	STD	STD	STD	STD	STD	STD	STD	STD	STD	STD	STD	STD	STD	
SAILTECH FOAM FILLED FIBERGLASS STRINGER SYSTEM	STD	STD	STD	STD	STD	STD	STD	STD	STD	STD	STD	STD	STD	STD	
STAINLESS COMMANDER STEERING WHEEL (HYD. ONLY)	STD	STD	STD	OPT	STD	OPT	STD	OPT	OPT	OPT	OPT	OPT	OPT	OPT	
STAINLESS STEERING WHEEL	STD	STD	STD	STD	STD	STD	STD	STD	STD	STD	STD	STD	STD	STD	
STEERING TELEFLEX HYDRAULIC	STD	STD	STD	STD	STD	STD	STD	STD	OPT	OPT	OPT	OPT	OPT	OPT	
STEERING TELEFLEX HYDRAULIC WITH TILT STEERING WHEEL	OPT	OPT	OPT	OPT	OPT	OPT	OPT	OPT	OPT	OPT	OPT	OPT	OPT	OPT	
STEERING TELEFLEX NO FEED BACK	N/A	N/A	N/A	N/A	N/A	N/A	N/A	STD	STD	STD	STD	STD	STD	STD	
TRANSOM SINK	STD	STD	N/A	STD	N/A	OPT	N/A	N/A	N/A	N/A	N/A	N/A	N/A	N/A	
TRIM TABS / HIGH PERFORMANCE	OPT	N/A	N/A	N/A	N/A	N/A	N/A	N/A	N/A	N/A	N/A	N/A	N/A	N/A	
TRIM TABS / HIGH PERFORMANCE HD W/AUTO RETRACT	TOPT	STD	N/A	N/A	N/A	N/A	N/A	N/A	N/A	N/A	N/A	N/A	N/A	N/A	
TRIM TABS	STD	N/A	OPT	OPT	OPT	OPT	OPT	OPT	N/A	N/A	N/A	N/A	N/A	N/A	
WIND SCREEN WITH STAINLESS STEEL GRAB RAIL	N/A	N/A	N/A	N/A	N/A	STD	STD	STD	N/A	STD	N/A	STD	STD	STD	
WALK THRU TRANSOM DOOR	STD	STD	STD	STD	STD	N/A	N/A	N/A	N/A	N/A	N/A	N/A	N/A	N/A	
WALK THRU WINDSHIELD	N/A	N/A	N/A	STD	N/A	N/A	N/A	N/A	N/A	STD	N/A	N/A	N/A	N/A	
WALK THRU WINDSHIELD CONNECTER & SIDE CURTAINS	N/A	N/A	N/A	OPT	N/A	N/A	N/A	N/A	N/A	OPT	N/A	N/A	N/A	N/A	
WINDLASS W/ANCHOR ROLLER ASSEMBLY	OPT	OPT	OPT	OPT	OPT	N/A	N/A	N/A	N/A	N/A	N/A	N/A	N/A	N/A	
<b>CABIN AMENITIES</b>															
CABIN BUTANE STOVE/SINK/FRESHWATER FAUCET	N/A	N/A	N/A	STD	N/A	N/A	N/A	N/A	N/A	N/A	N/A	N/A	N/A	N/A	
CABIN DINETTE TABLE	N/A	N/A	N/A	STD	N/A	N/A	N/A	N/A	N/A	N/A	N/A	N/A	N/A	N/A	
CABIN ICE BOX	N/A	N/A	N/A	STD	N/A	N/A	N/A	N/A	N/A	N/A	N/A	N/A	N/A	N/A	
CABIN V-BERTH CUSHIONS AND FILLER CUSHIONS	N/A	N/A	N/A	STD	N/A	N/A	N/A	N/A	N/A	N/A	N/A	N/A	N/A	N/A	

## 266 CC OPTIONAL PACKAGES

**PRO FISHING PAK:** Tilt Steering, White, Blue, Green, Grey, or Yellow Hullsides; S.S. Rubrail; Addl. Battery Switch.  
**OFFSHORE TOURNAMENT PAK:** High Performance Trim Tabs, Flush Mount Cleats & Bow Light, 4 Addl. Rod Holders, Dlx. T-Top.

## 238 CC OPTIONAL PACKAGES

**FISHING PAK:** Tilt Steering; White, Blue, Green, Grey, or Yellow Hullsides; S.S. Rubrail; Addl. Battery Switch; Addl. Auto Bilge Pump.  
**CUSTOM FISHING PAK:** Tilt Steering, Custom Colored Hull Sides, S.S. Rubrail, Addl. Battery Switch, Addl. Auto Bilge Pump.  
**PRO TOURNAMENT PAK:** Addl. Built-In Tackle Box, Flush Mount Cleats and Bow Light, Leaning Post Back Rest, Dlx. T-Top.

## 236 CC OPTIONAL PACKAGES

**PRO FISHING PAK:** Tilt Steering, White, Green, Grey, Blue, or Yellow Hullsides, S.S. Rubrail.  
**OFFSHORE TOURNAMENT PAK:** Flush Mount Cleats & Bow Light, 4 Addl. Rod Holders, Dlx. T-Top & Trim Tabs.

## 234 WAC OPTIONAL PACKAGES

**SPORT PAK:** Bimini Top, Fish Finder.  
**DELUXE SPORT PAK:** Deluxe Top, Trim Tabs, Foot Rest.

## 218 CC OPTIONAL PACKAGES

**PRO FISHING PAK:** Colored Hull, S.S. Rubrail, Rear Jump Seats.  
**OFFSHORE TOURNAMENT PAK:** Flush Cleats, 5 Addl. Rod Holders, Dlx. T-Top.

## 2100 BAY OPTIONAL PACKAGES

**SPORT PAK:** Trolling Motor Panel, 2 Addl. S.S. Rod Holders, Compass, Rear Jump Cushions.  
**PRO FISHING PAK:** Includes Sport Pak plus S.S. Cooler Seat or Deluxe Leaning Post, Colored Hull Sides & S.S. Rub Rail, Front Jump Seat Cushions, Flush Cleats.  
**INSHORE TOURNAMENT PAK:** Trolling Motor, Cast Deck Fish Seat & Pedestal, Console Livewell.

## 1900 BAY OPTIONAL PACKAGES

**SPORT PAK:** Trolling Motor Panel, 2 Addl. Rod Holders, Compass, Rear Jump Cushions.  
**PRO FISHING PAK:** Includes Sport Pak plus S.S. Cooler Seat or Deluxe Leaning Post, Colored Hull Sides & S.S. Rub Rail, Front Jump Seat Cushions, Flush Cleats.  
**INSHORE TOURNAMENT PAK:** Trolling Motor, Cast Deck Fish Seat, Rear Release Livewell.

## 206 CC OPTIONAL PACKAGES

**SPORT PAK:** Bimini Top, Fish Finder.  
**OFFSHORE TOURNAMENT PAK:** T-Top, Leaning Post, Colored Hull Sides, Fuel Water Separator.

## 198 CC OPTIONAL PACKAGES

**SPORT PAK:** Bimini Top, Fish Finder.  
**PLEASURE PAK:** Bow Cushion, Boat Cover.  
**INSHORE FISH PAK:** Bow Fish Seat, Trolling Plug, Split Bow Rail, Trolling Motor.

## 188/186 CC OPTIONAL PACKAGES

**SPORT PAK:** Bimini Top, Fish Finder.  
**PLEASURE PAK:** Bow Cushion, Boat Cover.  
**INSHORE FISH PAK:** Bow Fish Seat, Trolling Plug, Split Bow Rail, Trolling Motor.

## 174/170 CC OPTIONAL PACKAGES

**SPORT PAK:** Bimini Top, Fish Finder.  
**PLEASURE PAK:** Bow Cushion, Boat Cover.  
**INSHORE FISH PAK:** Bow Fish Seat, Trolling Plug, Trolling Motor.

DEMAND THE DIFFERENCE



**SAILFISH**

SEMINOLE MARINE INC.

2501 MILESTONE INDUSTRIAL PARK CAIRO, GA 39828

229.377.2125 FAX 229.377.1855

[WWW.SAILFISHBOATS.COM](http://WWW.SAILFISHBOATS.COM)

YOUR AUTHORIZED *SAILFISH* DEALER:

Factory Installed with  
 **YAMAHA**<sup>®</sup>  
When you want the best

SAILFISH BOATS COME PACKAGED WITH  
YAMAHA ENGINES, THE INDUSTRY LEADER  
IN DEPENDABLE OUTBOARDS.