

272 CENTER CONSOLE PERFORMANCE BULLETIN



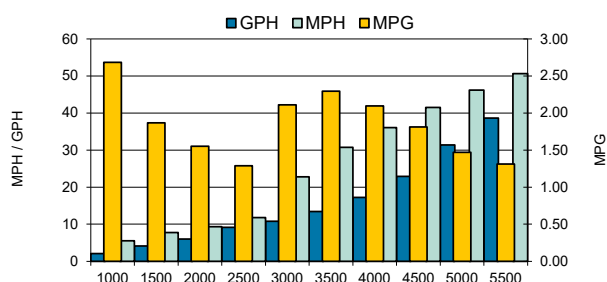
Motors: Twin Suzuki DF250APXW5

| PERFORMANCE | | | |
|-------------|--------------|-------------|-------------|
| RPM | MPH | GPH | MPG |
| 1000 | 5.50 | 2.05 | 2.68 |
| 1500 | 7.75 | 4.15 | 1.87 |
| 2000 | 9.30 | 6 | 1.55 |
| 2500 | 11.80 | 9.15 | 1.29 |
| 3000 | 22.80 | 10.8 | 2.11 |
| 3500 | 30.75 | 13.4 | 2.29 |
| 4000 | 36.05 | 17.2 | 2.10 |
| 4500 | 41.50 | 22.9 | 1.81 |
| 5000 | 46.15 | 31.4 | 1.47 |
| 5500 | 50.65 | 38.65 | 1.31 |
| 6000 | 54.20 | 46.1 | 1.18 |
| 6150 | 54.30 | 46.85 | 1.16 |

| ACCELERATION | |
|--|----------------|
| TOP SPEED (MPH @ RPM) | 54.3 @ 6150 |
| ACCELERATION 0-20MPH (SECONDS) | 6.34 |
| ACCELERATION 0-30MPH (SECONDS) | 8.76 |
| OPTIMUM CRUISING RANGE (Miles @ RPM) with 10% Fuel Reserve | 365 @ 3500 RPM |
| BEST FUEL ECONOMY (MPG @ RPM) | 2.29 @ 3500 |

| TEST CONDITIONS | |
|---------------------------------|-------|
| NUMBER OF PEOPLE | 3 |
| AIR TEMP (FARENHHEIGHT) | 55 |
| ELEVATION (FT. ABOVE SEA LEVEL) | 121 |
| WIND VELOCITY (MPH) | 0 |
| SEA STATE | CALM |
| FRESH/SALT WATER | FRESH |

| MANUFACTURER INFO | |
|--|----------------------------|
| NAME: | Sailfish Boats |
| STREET: | 2501 Industrial Park Drive |
| CITY, STATE, ZIP: | Cairo, GA 39828 |
| PHONE: | 229-377-2125 |
| FAX: | 229-377-1855 |
| WEBSITE: | www.sailfishboats.com |
| BOAT DETAILS | |
| BOAT MODEL | 272CC |
| LENGTH | 27'0" |
| BEAM | 9'1" |
| WEIGHT AS TESTED | 8,000 LBS |
| MAXIMUM HP | 500 |
| FUEL CAPACITY | 177 GAL |
| ENGINE DETAILS | |
| ENGINE MODEL/S | SUZUKI DF250APXW5 |
| HORSEPOWER | 250 HP |
| DISPLACEMENT | 4.028 L |
| WEIGHT | 639 LBS |
| LENGTH | 25", 25" |
| GEAR RATIO | 2.08:1 |
| ENGINE MOUNTING HEIGHT | |
| MOUNTING HOLE POSITION | 2 |
| PROPELLER/S | |
| SERIES | WATERGRIP |
| PROPELLER MATERIAL | Polished Stainless Steel |
| NUMBER OF BLADES | 3 |
| PITCH | 20"P |
| COMMENTS | |
| BOAT EQUIPPED WITH HALF TANK OF FUEL, THREE PERSONS, MISC. SAFETY AND TEST GEAR (APPROX 100 LBS) | |



Notice to Consumer: The information and data contained in this Performance Bulletin is approximate and subject to many different factors and variables. It is provided as a guideline only and should not be relied upon as representative of actual performance. Your boat's performance may be different than the information contained in this Performance Bulletin due to various factors including your boat's actual weight, wind and water conditions, temperature, humidity, elevation, bottom paint, boat options affecting wind/water drag and/or boat weight, and operator ability. Please confirm the specifications and performance data on your specific boat/engine combination with your dealer prior to purchase. Seminole Marine Inc. reserves the right to change the specifications and performance data of this Performance Bulletin or engine without notice.



SF10052023Z



www.sailfishboats.com