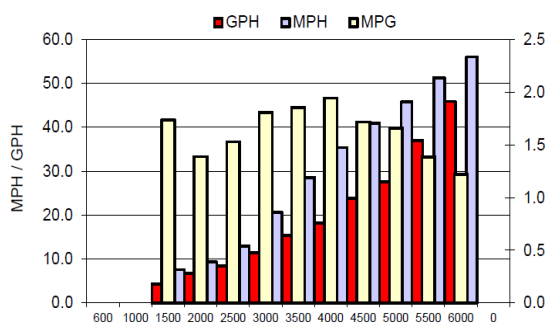


272 CENTER CONSOLE PERFORMANCE BULLETIN



Motor: Twin Mercury 250XL Verado

| PERFORMANCE | | | |
|-------------------------------------|------|-----------|------------|
| RPM | MPH | GPH | MPG |
| 1000 | | | |
| 1500 | 7.6 | 4.4 | 1.7 |
| 2000 | 9.3 | 6.7 | 1.4 |
| 2500 | 12.9 | 8.5 | 1.5 |
| 3000 | 20.6 | 11.4 | 1.8 |
| 3500 | 28.5 | 15.4 | 1.9 |
| 4000 | 35.4 | 18.2 | 1.9 |
| 4500 | 40.9 | 23.8 | 1.7 |
| 5000 | 45.8 | 27.6 | 1.7 |
| 5500 | 51.2 | 37.0 | 1.4 |
| 6000 | 58.0 | 45.9 | 1.2 |
| ACCELERATION | | | |
| Top Speed (mph @ rpm) | | 56 @ 6014 | |
| 0-20MPH: | | 3.39 | |
| 0-30MPH: | | 5.36 | |
| TEST CONDITIONS | | | |
| NUMBER OF PEOPLE | | | 3 |
| AIR / WATER TEMP (Fahrenheit) | | | 85 |
| ELEVATION (IN FEET ABOVE SEA LEVEL) | | | 144.1 ft. |
| SEA STATE | | | Calm |
| WIND VELOCITY | | | 11 MPH |
| FRESH/SALT WATER | | | Freshwater |



| MANUFACTURER INFO | |
|--|----------------------------|
| NAME: | Sailfish Boats |
| STREET: | 2501 Industrial Park Drive |
| CITY, STATE, ZIP: | Cairo, GA 39828 |
| PHONE: | 229-377-2125 |
| FAX: | 229-377-1855 |
| WEBSITE: | www.sailfishboats.com |
| BOAT DETAILS | |
| BOAT MODEL | 272CC |
| LENGTH | 27' 0" |
| BEAM | 9' 1" |
| WEIGHT AS TESTED (lbs) | 7,500 |
| DRY BOAT WEIGHT (lbs) | 6850 |
| MAXIMUM HP | 500HP |
| FUEL CAPACITY | 177 gal |
| ENGINE DETAILS | |
| ENGINE MODEL/S | 250XL Verado |
| HORSEPOWER | 250HP |
| CYLINDERS | 8 |
| DRIVE OR GEAR MODEL AND RATIO | HD CAMBER 1.85 |
| ENGINE HEIGHT (in) | 1.5, 1.5 |
| ENGINE SETBACK (in) | 13.8, 13.8 |
| ENGINE LENGTH (in) | 25, 25 |
| ENGINE MOUNTING HEIGHT | |
| MOUNTING HOLE POSITION | #3 |
| PROPELLER/S | |
| MERCURY NAME | Enerzia |
| PITCH | 19.0, 19.0 |
| PROPELLER MATERIAL | STAINLESS STEEL |
| NUMBER OF BLADES | 3 |
| COMMENTS | |
| Test weight includes 40 gallons of fuel, 3 batteries, safety and test equipment. | |

Notice to Consumer: The information and data contained in this Performance Bulletin is approximate and subject to many different factors and variables. It is provided as a guideline only and should not be relied upon as representative of actual performance. Your boat's performance may be different than the information contained in this Performance Bulletin due to various factors including your boat's actual weight, wind and water conditions, temperature, humidity, elevation, bottom paint, boat options affecting wind/water drag and/or boat weight, and operator ability. Please confirm the specifications and performance data on your specific boat/engine combination with your dealer prior to purchase. Seminole Marine Inc. reserves the right to change the specifications and performance data of this Performance Bulletin or engine without notice.



SF06012023Z



www.sailfishboats.com