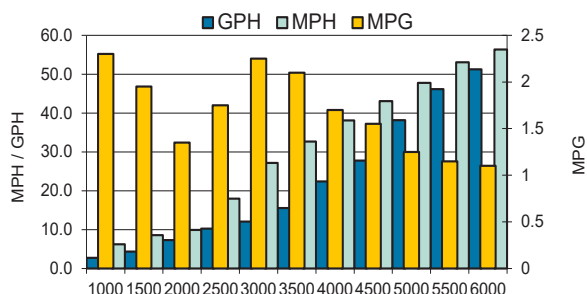


# 272 CENTER CONSOLE PERFORMANCE BULLETIN



**Motor:** Twin Yamaha F250XSB

PERFORMANCE			
RPM	MPH	GPH	MPG
1000	6.3	2.7	2.3
1500	8.6	4.4	1.95
2000	9.9	7.3	1.35
2500	18.0	10.3	1.75
3000	27.2	12.1	2.25
3500	32.7	15.6	2.1
4000	38.1	22.4	1.7
4500	43.1	27.8	1.55
5000	47.8	38.2	1.25
5500	53.1	46.2	1.15
6000	56.4	51.2	1.1
ACCELERATION			
0-20MPH:		3.84	
0-30MPH:		5.68	
TEST CONDITIONS			
NUMBER OF PEOPLE			2
AIR / WATER TEMP (Fahrenheit)			91/84
ELEVATION (IN FEET ABOVE SEA LEVEL)			131
WIND VELOCITY			8



MANUFACTURER INFO	
NAME:	Sailfish Boats
STREET:	2501 Industrial Park Drive
CITY, STATE, ZIP:	Cairo, GA 39828
PHONE:	229-377-2125
FAX:	229-377-1855
WEBSITE:	www.sailfishboats.com
BOAT DETAILS	
BOAT MODEL	272CC
LENGTH	27' 0"
BEAM	9' 1"
APROX WET WEIGHT	7500
MAXIMUM HP	500 HP
FUEL CAPACITY	177 gal
ENGINE DETAILS	
ENGINE MODEL/S	Twin F250XSB
HORSEPOWER	250
INDUCTION	EFI   DOHC   VCT
DISPLACEMENT	4169cc   42L
WEIGHT	257kg   567 lbs
GEAR RATIO	1.75 : 1
ENGINE MOUNTING HEIGHT	
MOUNTING HOLE POSITION	#1
HEIGHT	2.125
SETBACK	10.5
PROPELLER/S	
SERIES	SWS II
DIAMETER/PITCH	19
YAMAHA PART # (sgl/twin)	6CE-45970-20-00   6CF-45970-20-00
PROPELLER MATERIAL	POLISHED STAINLESS STEEL
COMMENTS	
Test weight includes 30 gallons of fuel, 3 batteries, 25 lbs of safety and test equipment.	

**Notice to Consumer:** The information and data contained in this Performance Bulletin is approximate and subject to many different factors and variables. It is provided as a guideline only and should not be relied upon as representative of actual performance. Your boat's performance may be different than the information contained in this Performance Bulletin due to various factors including your boat's actual weight, wind and water conditions, temperature, humidity, elevation, bottom paint, boat options affecting wind/water drag and/or boat weight, and operator ability. Please confirm the specifications and performance data on your specific boat/engine combination with your dealer prior to purchase. Seminole Marine Inc. reserves the right to change the specifications and performance data of this Performance Bulletin or engine without notice.



SF07202023Z



www.sailfishboats.com