

# 316 CENTER CONSOLE PERFORMANCE BULLETIN



**Motors:** Twin Mercury 350HP V10 Verado

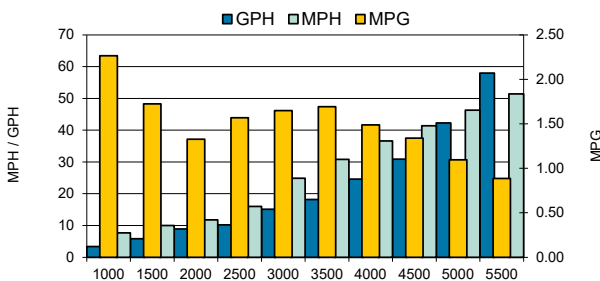
PERFORMANCE			
RPM	MPH	GPH	MPG
1000	7.70	3.4	2.26
1500	10.00	5.8	1.72
2000	11.80	8.9	1.33
2500	16.00	10.2	1.57
3000	24.90	15.1	1.65
<b>3500</b>	<b>30.8</b>	<b>18.2</b>	<b>1.69</b>
4000	36.60	24.6	1.49
4500	41.40	30.9	1.34
5000	46.30	42.3	1.09
5500	51.40	58	0.89
6000	56.30	61.2	0.92
6400	58.80	63.3	0.93

ACCELERATION	
TOP SPEED (MPH @ RPM)	58.8 @ 6400
ACCELERATION 0-20MPH (SECONDS)	3.58
ACCELERATION 0-30MPH (SECONDS)	5.34
OPTIMUM CRUISING RANGE (Miles @ RPM) with 10% Fuel Reserve	403 @ 3500 RPM
BEST FUEL ECONOMY (MPG @ RPM)	1.69 @ 3500

TEST CONDITIONS	
NUMBER OF PEOPLE	3
AIR TEMP (FARENHIGHT)	55
ELEVATION (FT. ABOVE SEA LEVEL)	121
WIND VELOCITY (MPH)	0
SEA STATE	CALM
FRESH/SALT WATER	FRESH



MANUFACTURER INFO	
NAME:	Sailfish Boats
STREET:	2501 Industrial Park Drive
CITY, STATE, ZIP:	Cairo, GA 39828
PHONE:	229-377-2125
FAX:	229-377-1855
WEBSITE:	www.sailfishboats.com

BOAT DETAILS	
BOAT MODEL	316DC
LENGTH	30'6"
BEAM	9'9"
WEIGHT AS TESTED	11,500 LBS
MAXIMUM HP	800 HP
FUEL CAPACITY	265 GAL

ENGINE DETAILS	
ENGINE MODEL/S	MERCURY 350HP 5.7L V10 VERADO
HORSEPOWER	350 HP
DISPLACEMENT	5.7L
WEIGHT	695 LBS
LENGTH	30", 30"
GEAR RATIO	2.08:1

ENGINE MOUNTING HEIGHT	
MOUNTING HOLE POSITION	4

PROPELLER/S	
SERIES	REVOLUTION X
PROPELLER MATERIAL	Polished Stainless Steel
NUMBER OF BLADES	4
PITCH	22"P

COMMENTS	
BOAT EQUIPPED WITH HALF TANK OF FUEL, THREE PERSONS, MISC. SAFETY AND TEST GEAR (APPROX 100 LBS)	

**Notice to Consumer:** The information and data contained in this Performance Bulletin is approximate and subject to many different factors and variables. It is provided as a guideline only and should not be relied upon as representative of actual performance. Your boat's performance may be different than the information contained in this Performance Bulletin due to various factors including your boat's actual weight, wind and water conditions, temperature, humidity, elevation, bottom paint, boat options affecting wind/water drag and/or boat weight, and operator ability. Please confirm the specifications and performance data on your specific boat/engine combination with your dealer prior to purchase. Seminole Marine Inc. reserves the right to change the specifications and performance data of this Performance Bulletin or engine without notice.



SF03212024A



www.sailfishboats.com